

Pindula

Pindula.co.zw

Kariba

Profile downloaded on 22 Sep 2018

For an updated profile visit <https://pindula.co.zw/Kariba>

Kariba is a town located in the Zambezi Valley [Mashonaland West Province](#) in [Zimbabwe](#). Kariba town offers accommodation for tourists who visit the Kariba dam. The town also houses the hydroelectric power station, [Zimbabwe Power Company](#).

Kariba



Population (2012)

27 000

Website

www.karibamun.org.zw

Population

According to a 2012 population census Kariba had a population of 27 000. The population comprises of both sexes of different nationalities although the majority are local Zimbabweans.

Background

The town was established to cater for employees, who were constructing the dam in the 1950s. Operation Noah, a 5?year wildlife rescue operation, rescued over 6,000 animals, most of which were relocated to the [Matusadona National Park](#) whilst the Lake filled up upon completion of the Dam. Besides wildlife, a large number of families were relocated and homed in new towns and villages, now on the shores of the

Pindula

Lake such as Kariba, Binga, Mlibizi and Siavonga. The filling of the Lake between 1958 and 1963 caused more than 20 earthquakes of greater than 5 magnitude on the Richter Scale. The Lake then became a tourist attraction on both the Zambian and Zimbabwean side of the Lake, frequented by local and international visitors. Kariba has many mooring opportunities both on the mainland and on islands and offers idyllic waterfalls in places like the Sanyati Gorge ^[1]

Activities

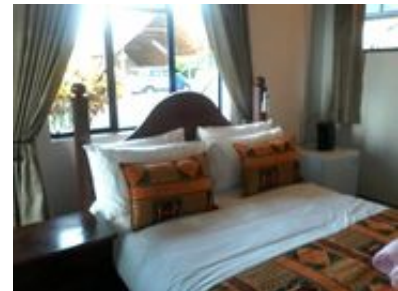
There are two casinos in the town and several restaurants. Many of the attractions in Kariba for the tourist are water-based: Fishing, game-viewing and house-boating are the most popular activities. Tourists visit the Kariba Dam wall and the crocodile farm.

Besides tourism and fishing, the electricity-production for the country is another important industry: The Zimbabwe Power Company ZPC employs workers in the hydroelectric power station.

Locations

Kariba has three main suburbs, the high-density areas of Mahombekombe and Nyamhunga as well as Kariba Heights, the inland suburb and home to the Operation Noah monument. Kariba Heights is located on hills and gives a bigger view of the Lake Kariba. ^[2]

Pictures



Pindula

About Pindula

Pindula is a place to find information about local things on the internet. We do it a lot like Wikipedia, except everything is hyper-local. We started work on Pindula because we needed something like it. There's so little useful information about local things online and we're working to change that

To join the Pindula community of editors, please go to <https://contribute.pindula.co.zw?> or just get in touch with us on **WhatsApp: +263 77 770 7852**.

References

1. ? [Lake Kariba](#), *Masutadona*, *Published*, *Retrieved: 27 March 2018*
2. ? [Welcome to Kariba Municipality](#), *Kariba*, *Published: , Retrieved: 27 March 2018*